



COMPANY PROFILE



Batam, 13 Oct 2016

www.cte.co.id



**Approved ASME U, U2 & R Acknowledge
API 4 F (PSL 1 Approved Facility)**



PT. CITRA TUBINDO ENGINEERING

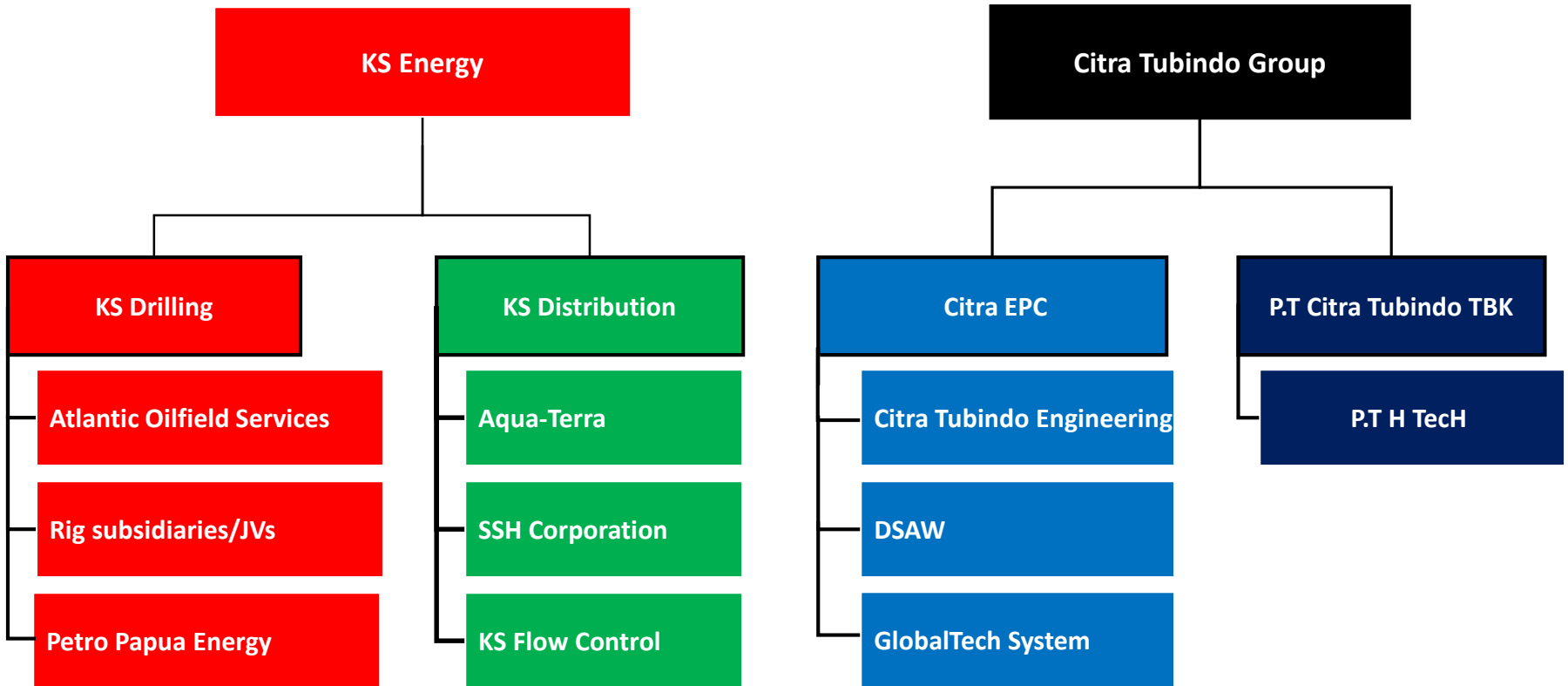
Our Vision

**TO BE THE PREFERRED FABRICATOR AND MANUFACTURER
OF DRILLING RIG FACILITIES ONSHORE & OFFSHORE,
STRUCTURAL PLATFORMS, TOPSIDE & PROCESS MODULES AND
EQUIPMENT IN THE OIL AND GAS INDUSTRIES**

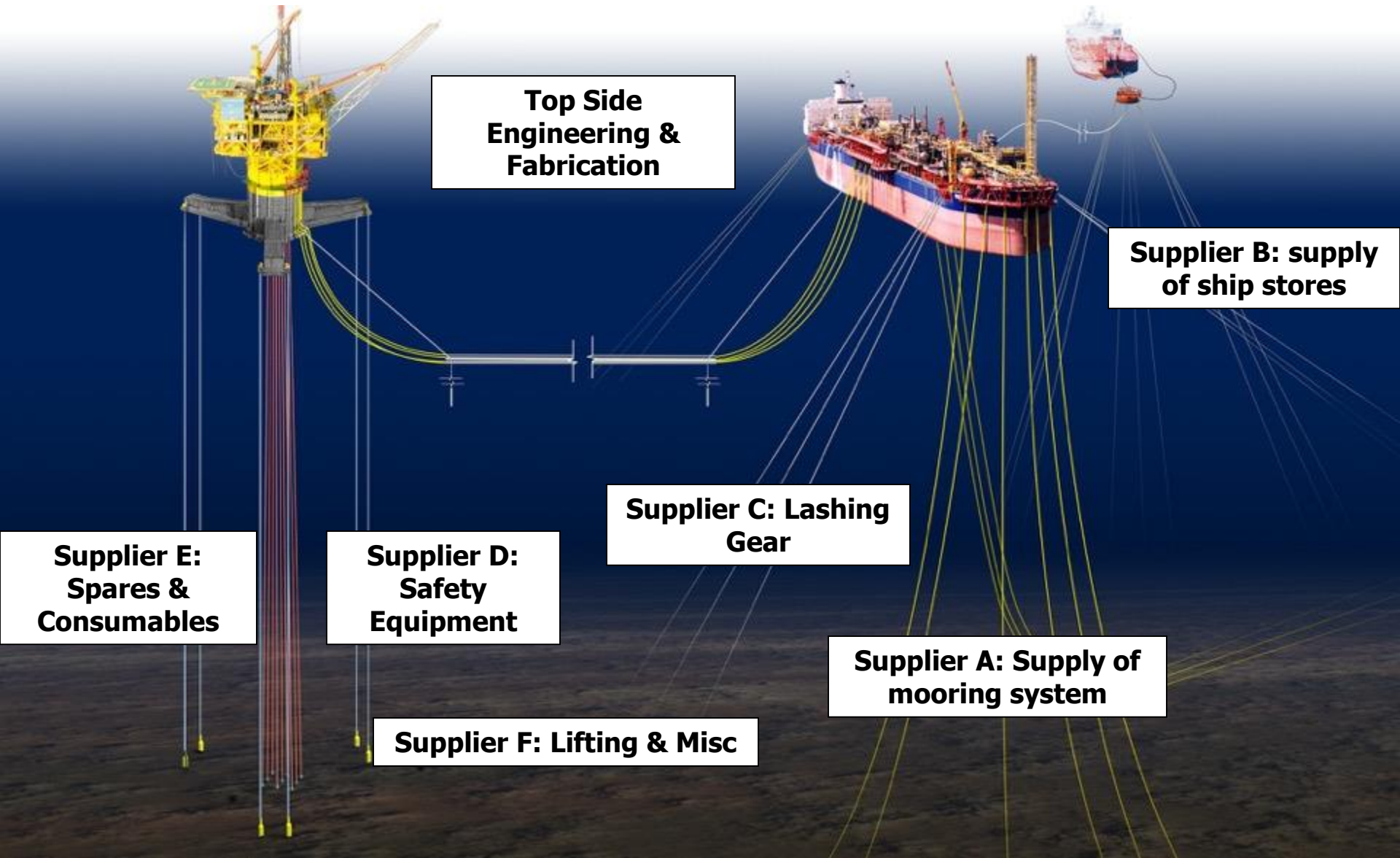
Our Mission

**TO PROVIDE A SEAMLESS AND INNOVATIVE PARTNER
SOLUTION FOR THE OIL AND GAS, ENERGY AND
PROCESS INDUSTRY**

ALLIANCES



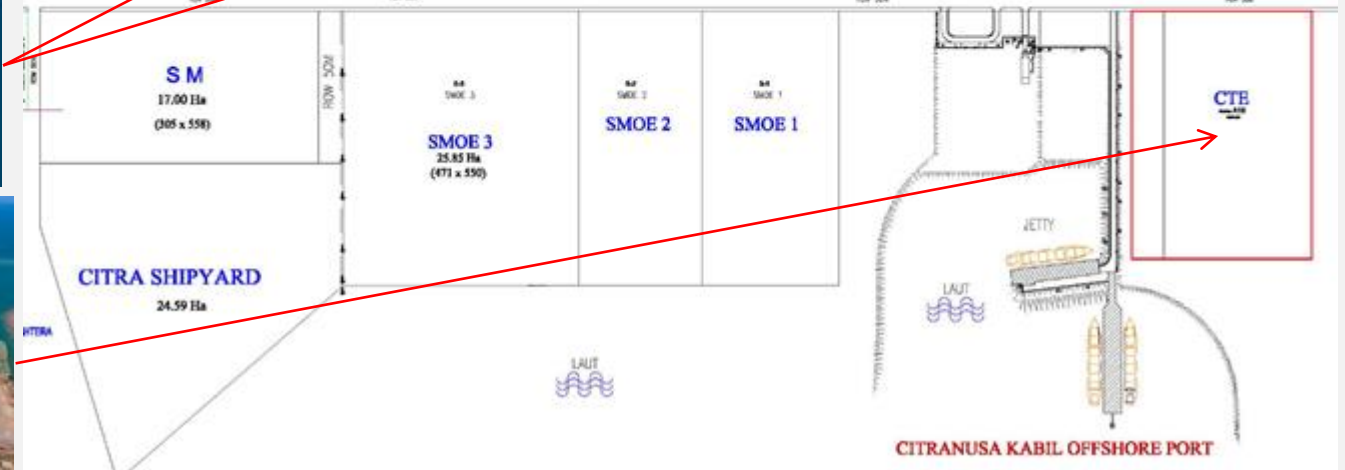
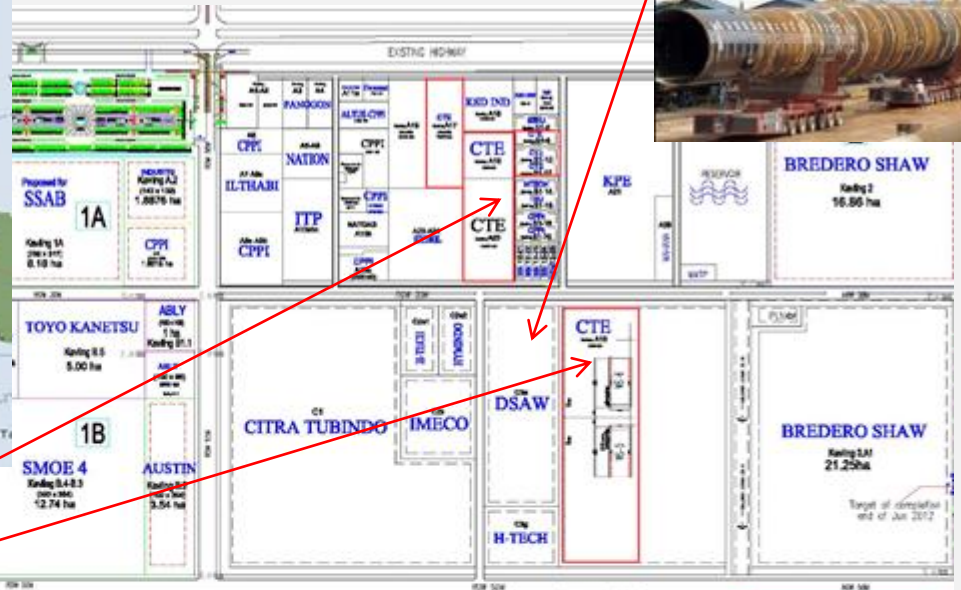
AN INTEGRATED OILFIELD EQUIPMENT AND SERVICES SUPPLY HUB



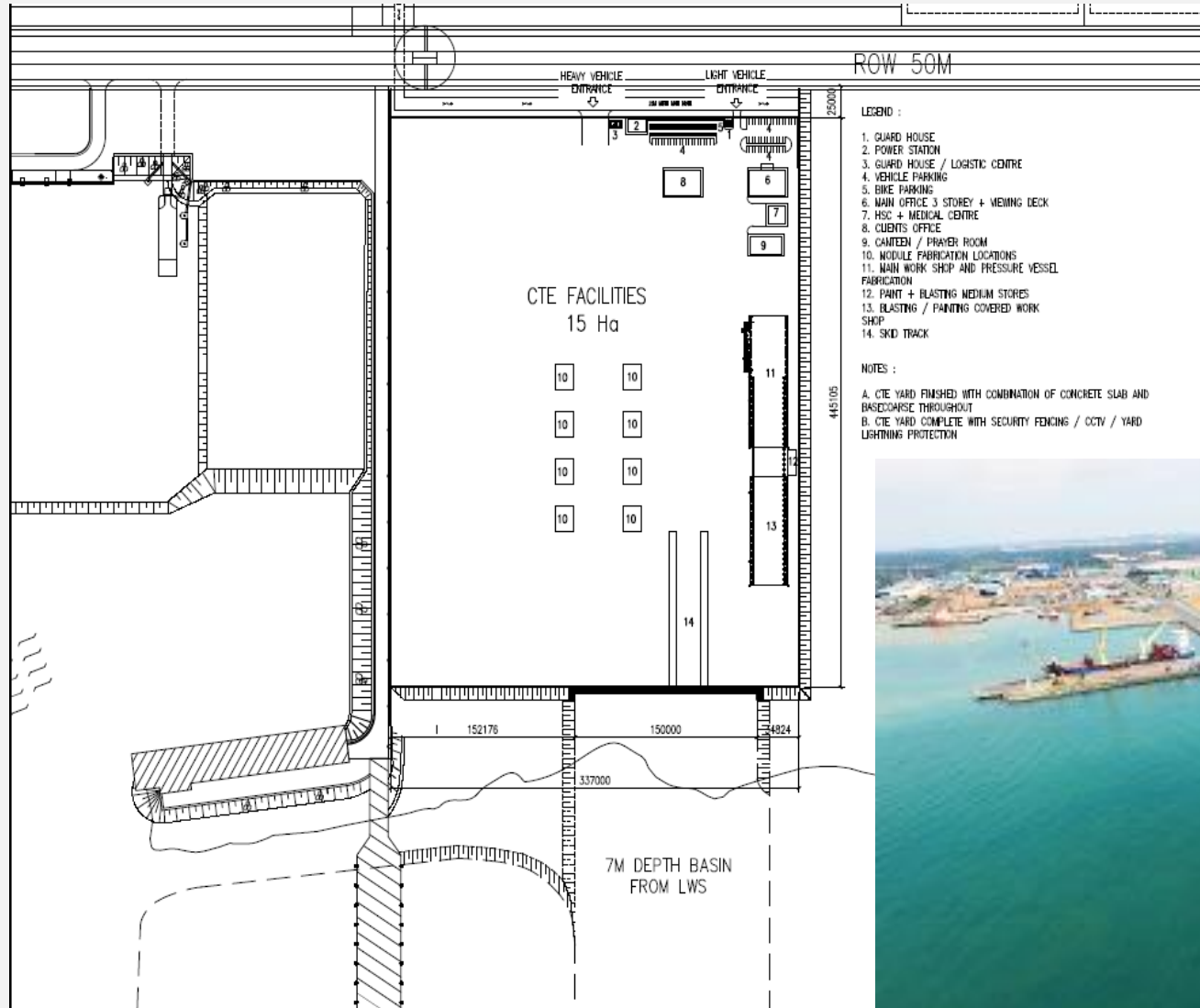


PT. CITRA TUBINDO ENGINEERING

MAP LOCATION



Further Yard Development Plan GROWTH INVESTMENT



YARD GENERAL INFORMATION

Total Area (approx)	sq.m	99550
Main Office (2nd Floor)	sq.m	1500
Fabrication Covered Workshop :		
Workshop - 1	sq.m	1600
Workshop - 2	sq.m	1600
Workshop - 3	sq.m	1600
Workshop - 4	sq.m	750
Workshop - 5	sq.m	3100
Workshop - 6	sq.m	3100
Open Yard		
Open yard for fabrication and Storage area	sq.m	15000
Open yard for fabrication and erection (WS 1-2-3-4)	sq.m	30000
Open yard for fabrication and erection (WS 5-6)	sq.m	41300
Estimate yearly production	MT	12,000
Estimate yearly Manhours	Mhrs	4,200,000

Workshop and yard facility

Dedicated area for project management office, fabrication of Pressure vessel, Pig launcher & receiver, Piping including exotics material and misc. tertiary steel



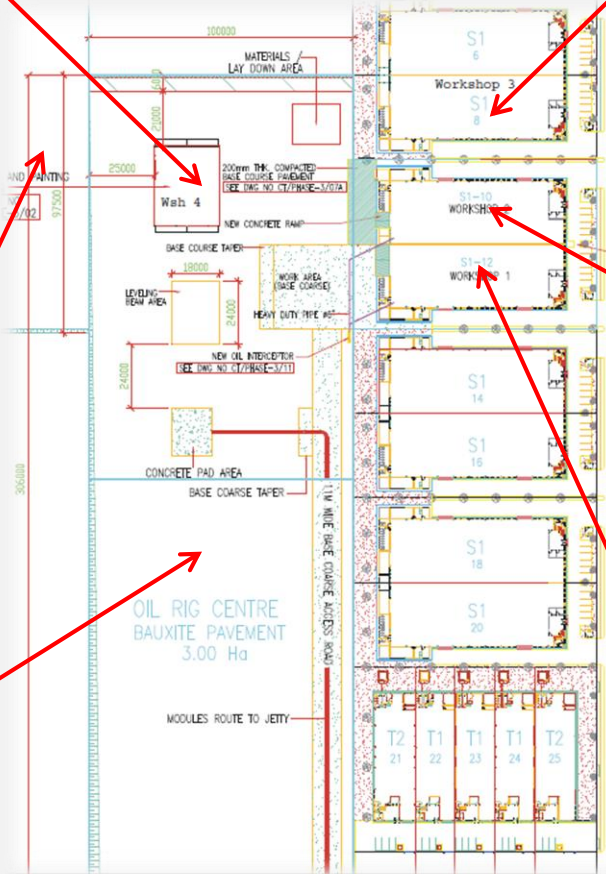
Workshop -4



Open storage & fab yard



Fabrication yard



Workshop -3



Workshop -2



Workshop -1



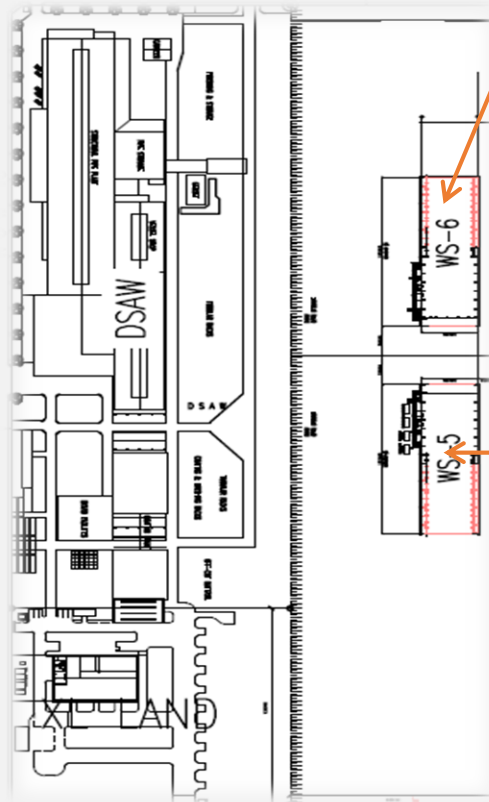
PT. CITRA TUBINDO ENGINEERING

Workshop -5 & 6

Workshop - 5	sq.m	3100
Dimension	30W x 102L x 9H (at hook)	
Lifting equipments & capacity	Over head crane	50 T & 20 T

Workshop - 6	sq.m	3100
Dimension	30W x 120L x 9H (at hook)	
Lifting equipments & capacity	Over head crane	25 T & 25 T

Rolling and bending facility which in junction with WS-5&6 would be dedicated area for Rolling, make up & pre assembly of Jacket, Legs, Piles, Conductor & Deck legs



Rolling & Bending Facilities

In Conjunction With Affiliated PT DSAW





PT. CITRA TUBINDO ENGINEERING

Rolling & Bending Facilities

In Conjunction With Affiliated PT DSAW

CAPABILITY CHART FOR BEND AND ROLL MACHINE

OD (mm)	Plate Thickness (mm)		
	Max Length 3000 (mm)	Max Length 4100 (mm)	Max Length 6100 (mm)
610	12-25		12-20
660	12-25		
710	12-30		
762	12-32		
914	12-32		
1200	12-32		
1524	40-120	40-85	NA
2130			
2500			
3000			
3500			
4000			
4500			
5000			
6000 (2 section)			
7000 (3 section)			

CAPABILITY CHART FOR FORMING MACHINE 12,000 mm

OD (mm)	Plate Thickness Capacity For Length : 12,000 mm
472-507	10,00 - 12,70
508-609	10,00 - 15,88
610-761	12,70 - 19,00
≥ 762	12,70 - 25,40

CAPABILITY CHART FOR SPIRAL MACHINE

OD (mm)	Plate Thickness Capacity For Length : 12,000 mm
762-913	10,00 - 20,00
914-1399	10,00 - 22,00
≥ 1400	10,00 - 25,00

PORT Facilities and Infrastructure

BERTH-1

Length	m	130
Depth at lower water spring	m	5
Number of Bollards	units	6

BERTH-2

Jetty Ramp	m	30 x 7,5
Depth at lower water spring	m	5
Number of Bollards	units	4

BERTH-3

Width	m	29
Length	m	176
Depth at lower water spring	m	10
Number of Bollards	units	15
Max. dead weight tonnage	DWT	28000

BERTH-5 & 6

Width	m	36
Length	m	198
Mooring dolphin	Extension of	m 25
Depth at lower water spring	m	12,5
Number of Bollards	units	20
Max. dead weight tonnage	DWT	40000

PORT Facilities and Infrastructure



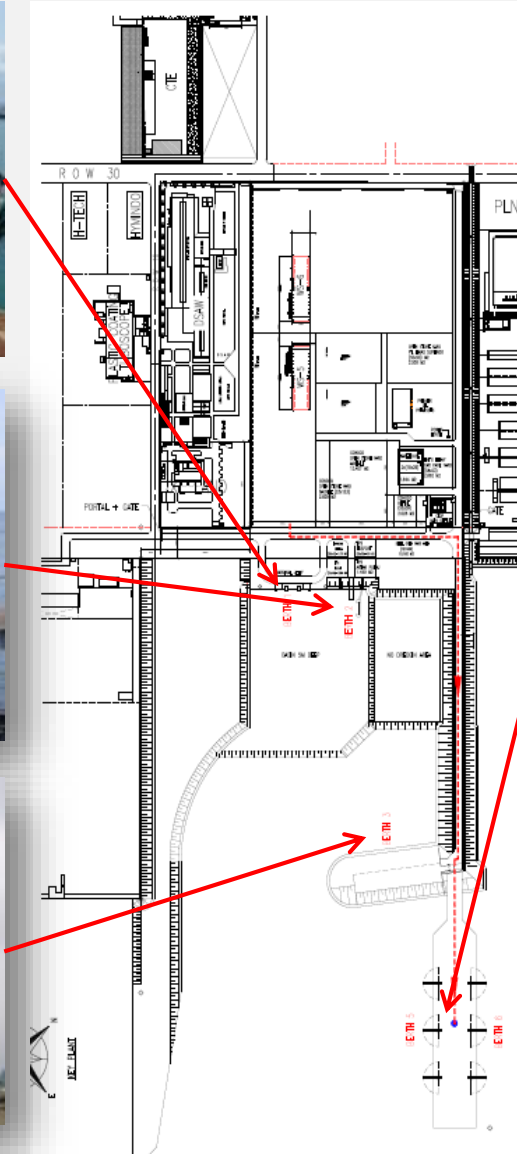
BERTH-1



BERTH-2



BERTH-3



BERTH- 5 & 6





PT. CITRA TUBINDO ENGINEERING

LIFTING EQUIPMENT LIST

NO	TYPE	TOTAL	Remark
1	Crane 250 Ton	2 Unit	Group Company
2	Crane 135 Ton	1 Unit	Group Company
3	Crane 100 Ton	1 Unit	Group Company
4	Crane 50 Ton	3 Unit	Group Company
5	Rough Terrain Crane	1 Unit	Group Company
6	Forklift 18 Ton	1 Unit	CTE
7	Forklift 5 Ton	1 Unit	Group Company
8	Forklift 4.5 Ton	1 Unit	CTE
9	Forklift 3 Ton	1 Unit	CTE
10	Forklift 3 Ton	3 Unit	Group Company
11	Forklift 3.5 Ton	1 Unit	Group Company
12	Reach Stacker	2 Unit	Group Company
13	Wheel Loader	4 Unit	Group Company
14	SPMT	20 Axle	Subcontractor



Forecasted Manpower Loading 2016

DEPARTMENT	PERSONS
Engineering	27
Cost Estimator	4
QA/QC	22
Planning	4
HSE	16
Fabrication PMT	20
Welders/Fitters	±700
General/ Support	45



PT. CITRA TUBINDO ENGINEERING

PROJECT OVERVIEW

GENERAL FABRICATION (Module, Pile, Dolphin Jetty, Stinger)

Nabor - Murphy Project (FDPSO)





PT. CITRA TUBINDO ENGINEERING

PROJECT OVERVIEW

GENERAL FABRICATION (Module, Pile, Dolphin Jetty, Stinger)

Nabor - Murphy Project (FDPSO)





PT. CITRA TUBINDO ENGINEERING

PROJECT OVERVIEW

GENERAL FABRICATION (Module, Pile, Dolphin Jetty, Stinger)

Gorgon Project



PROJECT OVERVIEW

GENERAL FABRICATION (Module, Pile, Dolphin Jetty, Stinger)

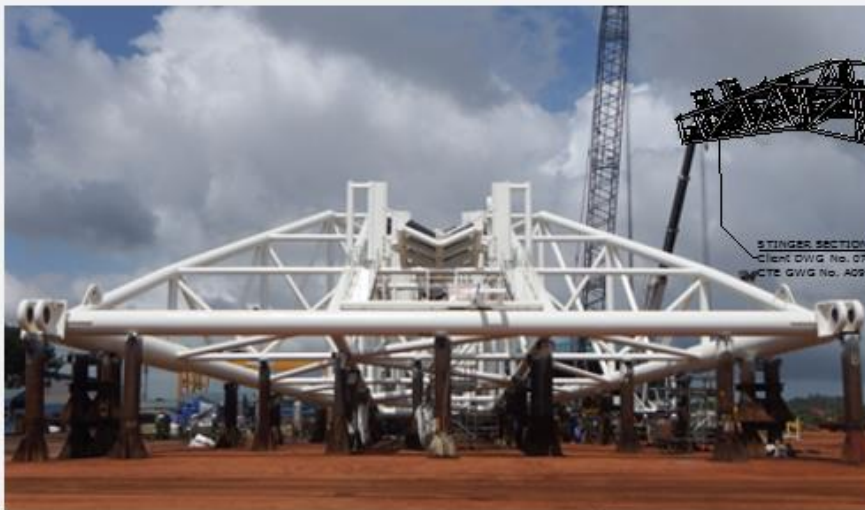


Leg North Sea 3250



PROJECT OVERVIEW

GENERAL FABRICATION (Module, Pile, Dolphin Jetty, Stinger)



FULL ASSEMBLY STINGER 145m - SEA TRUCK
SCALE 1 / 125



PT. CITRA TUBINDO ENGINEERING

PROJECT OVERVIEW

GENERAL FABRICATION (Pressure Vessel)



PROJECT OVERVIEW

GENERAL FABRICATION (Pressure Vessel)





PT. CITRA TUBINDO ENGINEERING

PROJECT OVERVIEW

RIG FABRICATION



PROJECT OVERVIEW

RIG FABRICATION



THANK YOU AND WELCOME TO CTE BATAM



**Approved : ASME U,U2 & R Workshop
API 4F
MIGAS Certification for Integrated Engineering
Services**